



## SPECIFICATIONS

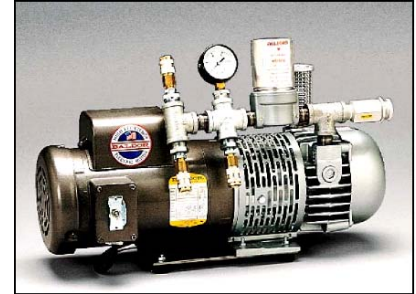
Product Description: **AMBIENT AIR PUMP A-1500 TE**  
 Part Number: **9832**  
 Style: **ROTARY VANE**

### GENERAL DESCRIPTION:

Portable air source for up to three full or half face respirator users, or two hood users. Solid performance in multi-worker applications, cleaning, sanding or chemical handling operations.

### CONSTRUCTION:

- Rigid metal base & housing with four rubber feet
- Brass & galvanized steel plumbing
- Quick-connect Rectus (OBAC) fittings (other fittings available upon request)
- Adjustable brass pressure relief valve
- Pressure gauge 0-15 psi (0-1.03 bar)
- Fan guard
- Powder coated gray



### PUMP

Type: Oil-less, rotary vane, direct driven  
 Vanes: Carbon construction (4ea/ replaceable) (3.5" (8.89cm) X 1.3" (3.40cm) X 0.188" (.47cm)  
 Inlet Filter: 50 micron felt material  
 Exhaust Filter: 0.3 Micron HEPA  
 Working Pressure: 2-12 psi (.14-.83 bar) (15 psi max (1.03 bar))  
 Performance: 0-20 CFM (0-33.9 m³/hr) (adjusted via pressure relief valve)  
 Airline length: 100 Feet (30.4m) maximum, from pump to respirator (sold separately)  
 Noise level: At Pump: 95 dB  
 At 6 feet (1.82m): 85 dB  
 At 10 feet (3.04m): 78 dB

### MOTOR:

HP: 1½ HP, TEFC continuous duty  
 Certifications: UL Recognized, CSA Certified  
 Volts: 115V/230V AC Single Ø, 60 Hz  
 Current Draw: 16 A @115V (8.4 A @ 230V)  
 RPM: 1725  
 NEMA Nom Eff: 72.0  
 Cord: 8' (2.43m) 14/3 AWG SJTW-A 300V Neoprene medium duty  
 Switch: Toggle, external ON/OFF  
 Plug: NEMA L5-15P (L6-20P in 230V configuration) 3 prong

### DIMENSIONS:

Length In (cm)	Width In (cm)	Height In (cm)	Weight Lb (Kg)
23 ½" (59.6)	9 ½" (24.1)	15 ½" (39.7)	97 lbs (43.99)



## SPECIFICATIONS

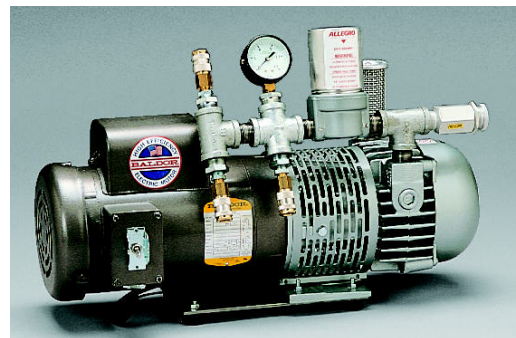
Product Description: **AMBIENT AIR PUMP A-1500 EX**  
Part Number: **9833**  
Style: **ROTARY VANE, EXPLOSION PROOF**

### GENERAL DESCRIPTION:

Portable explosion proof air source for up to three full or half face respirator users, or two hood users. Solid performance in multi-worker applications, sanding or chemical handling operations.

### CONSTRUCTION:

- Rigid metal base & housing with four rubber feet
- Brass & galvanized steel plumbing
- Quick-connect Rectus (OBAC) air fittings
- Adjustable brass pressure relief valve
- Pressure gauge 0-15 psi (0-1.03 bar)
- Fan guard
- Powder coated gray



### PUMP:

Type: Oil-less, rotary vane, direct driven  
Vaness: Carbon construction (4ea/ replaceable) (3.5" (8.89cm) X 1.3" (3.40cm) X 0.188" (.47cm)  
Inlet Filter: 50 micron felt material  
Exhaust Filter: 0.3 Micron HEPA  
Working Pressure: 2-12 psi (.14-.83 bar) (15 psi (1.03 bar) max)  
Performance: 0-15 CFM (0-25.48 m<sup>3</sup>/hr) at 60 Hz (adjusted via pressure relief valve)  
Airline length: 100 feet (30.4m) maximum, from pump to respirator (sold separately)  
Noise level: At Pump: 95 dB, at six feet (1.82m): 85 dB, at 10 feet (3.04m): 78 dB

### MOTOR:

Type: 1 1/2 HP, TEFC continuous duty  
Certifications: UL Listed, CSA Certified  
Volts: 115V/230 VAC, Single Ø, 60 Hz  
Current Draw: 16 A @ 115V (8.4 A @ 230V)  
RPM: 1725  
NEMA Nom Eff: 75.0  
Cord: 12' (3.65m) 12/3C AWG SJOOW-A 300V neoprene medium duty  
Plug: 20A 125V AGP Type, hazardous location

### HAZARDOUS LOCATION:

Class: I	Class: II
Divisions: 1 & 2	Division: 1 & 2
Group: D	Groups: F & G

### DIMENSIONS:

Length In (cm)	Width In (cm)	Height In (cm)	Weight Lb (Kg)
27" (68.5)	10" (25.4)	15" (38.1)	122 lbs (55.33)