



Soft Euroflex hygienic mattress

For the best medical bed comfort

The Soft Euroflex hygienic mattress is an antidecubitus mattress which both prevents and treats bedsores. It's constructed using several layers of unique pressure reducing foam, which adjusts to the body and spreads the pressure. This eases the circulation of blood and minimises the risk of sores caused by pressure.

The Soft Euroflex hygienic mattress is used both for preventing and treating pressure wounds in early stages (bedsores).

The Soft Euroflex hygienic mattresses unique surface and multilayer construction reduces the shearing forces between the skin of the patient and underlying body tissue during movement.



UNDVIK
VASA FÖREFALL!



INGA
ANDRA PLASTPRODUKTER
I DIREKTAKT MED
LENTEXSUKITE!



UNDVIK
AUTOKLAVERING!



ALDRIG
KLORINÄTTA
RENGÖRINGSMEDEL!



VID SKADA
ANVÄND VÅR SPECIAL-
TEJF LENTEX!



VID ODÖR
RENGÖR MED CITRON-
ESSENS PÅ FUKTIG MASÅ.



DESINFICERA
MED ALKOHOLBENÄTT
RENGÖRINGSMEDEL
MED TENDÖR!



RENGÖRING
ANVÄND TÄMLIGT REKONCENTRAT
RENGÖRINGSMEDEL
0,8% KONCENTRAT!

CE • FREONFRI • UPPFYLLED BRANDKRÄV NT FIRE 037: A+B

Antidecubitus
Soft Euroflex
with **Lentex**

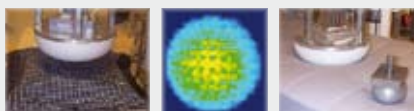
Bromevägen 3, 891 60 Örnsköldsvik
Tel. +46 (0)680 22 28 50, www.jarven.se



Soft Euroflex hygienic mattress

The treating mattress

| Mattress | Large Indenter 300 N | Large Indenter 600 N | Small Indenter 40 N | The method of measuring |
|--|-------------------------|-------------------------|------------------------|--|
| Soft Euroflex | 28,9 | 61,1 | 52,1 | To avoid the individual impact of different people when measuring pressure, Swerea IVF has developed pressure indenters, simulating the shape of selected parts of the human body. An objective evaluation method has been created by applying pressure equal to a medium sized human body on the indenters and measuring with pressure mats. The method of measurement is described in a proposal to the Swedish standard with the designation SS 876 00 13 |
| Waterlily | 30,1 | 55,9 | 56,4 | |
| Solid | 30,6 | 46,8 | 53,7 | |
| Exclusive | 35,9 | 53,0 | 59,2 | |
| Soft Comfort | 37,5 | 53,6 | 60,5 | |
| Comfort | 41,9 | 54,5 | 64,5 | |
| <ul style="list-style-type: none"> All measurements in mm Hg, Low number equals low pressure against the body The number on "Large Indenter 600 N" | | | | |



Please contact Järven Health Care or SWEREA/IVF for more information about the test method

Features of the Soft Euroflex hygienic mattress:

The Soft Euroflex hygienic mattress is a 3-layer mattress using 2 cm super-soft cold foam, 4 cm pressure reducing Flexfoam (57 kg/m³) and 7 cm Waterlily foam (54 kg/m³).

The Soft Euroflex hygienic mattress is laminated with our unique surface layer Lentex, which repels moisture and fluid. Lentex is a very flexible hygienic surface layer which contributes to the Soft Euroflex hygienic mattresses excellent pressure reducing qualities. The white colour aids early discovery of pollution on the surface of the mattress, an extra help for achieving a better hygiene.

The Soft Euroflex hygienic mattress is suitable for use with patients suffering from pain, sensitive intensive care patients and patients suffering from pressure wounds (bedsores) stage 1-2.

| Article number | Standard sizes |
|----------------|------------------|
| 50700 | 190-205x80x13 cm |
| 50750 | 190-205x85x13 cm |
| 50800 | 190-205x90x13 cm |

Alternate sizes are available on special order. The Soft Euroflex hygienic mattress can be ordered with optional surface layers other than Lentex. CE-certified. Freon free.

Warranty: 3 years for structural fatigue (Swedish standard B value test according to SS 876 00 11).

5 years for the Lentex surface adhesion.

All Järven mattresses are marked with manufacturing year and week as well as order number. This can be found on the short side of the mattress.

PRISMA - Your health care mattressguide

By using our PRISMA - mattressguide you will be able to choose the mattress that is right for you and your needs. For further information please contact us.



Järven Health Care

Bromsvägen 3 • SE-891 60 Örnsköldsvik, SWEDEN
 Telefon: 0660-22 28 50 • Telefax: 0660 - 824 10
 Internet: www.jarven.se • E-mail: healthcare@jarven.se

COMFORT



HYGIENE



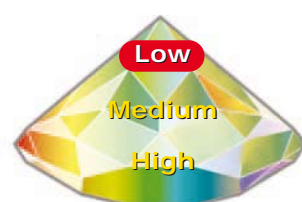
DURABILITY



PATIENT/USER WEIGHT



ENVIRONMENT



FIRE SAFETY REQ.

