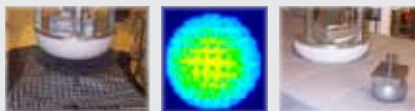


Solid hygiene mattress

Comfort for heavier users

Mattress	Large Indenter 300 N	Large Indenter 600 N	Small Indenter 40 N	The method of measuring
Soft Euroflex	28.9	61.1	52.1	To avoid the individual impact of different people when measuring pressure, Swerea IVF has developed pressure indenters, simulating the shape of selected parts of the human body. An objective evaluation method has been created by applying pressure equal to a medium-sized human body on the indenters and measuring with pressure mats. The method of measurement is described in a proposal to the Swedish standard with the designation SS 876 00 13
Waterlily	30.1	55.9	56.4	
Solid	30.6	46.8	53.7	
Exclusive	35.9	53.0	59.2	
Soft Comfort	37.5	53.6	60.5	
Comfort	41.9	54.5	64.5	
• All measurements in mm Hg. Low number equal low pressure. • The number on "Large Indenter 600 N" is of special importance for heavier users.				
Please contact Järven Health Care or SWEREA/IVF for more information about the test method				



Features of the Solid hygiene mattress:



Solid hygiene mattress is a 3-layer mattress using 1,5 cm Super soft foam, 4 cm pressure-reducing Flexfoam (57 kg/m³) and 14,5 cm Waterlily foam (54 kg/m³).

The Solid hygiene mattress is laminated with our unique surface layer, Lentex, which repels moisture and fluid. Lentex is a very flexible hygienic surface layer which contributes to the Solid hygienic mattress's excellent pressure reducing qualities. The white colour aids early discovery of soiling on the surface of the mattress, an extra help for achieving better hygiene.

The Solid hygiene mattress is manufactured for people with weights above 130 kg. This mattress provides good medical comfort for heavier people without reducing quality or hygiene.

Article number	Standard Sizes
50600	190-205 x 80 x 20 cm
50610	190-205 x 85 x 20 cm
50620	190-205 x 90 x 20 cm

Alternate sizes are available on special order. CE-certified. Freon free.

Warranty: 3 years for structural fatigue (Swedish standard B value test according to SS 876 00 11).
5 years for the Lentex surface adhesion.

All Järven mattresses are marked with the manufacturing year and week as well as the order number. This can be found on the short side of the mattress.

PRISMA - Your health care mattress guide

By using our PRISMA - mattress guide you will be able to choose the mattress that is right for you and your needs. For further information, please contact us.

PRISMA Your health care mattress guide.

COMFORT



HYGIENE



DURABILITY



PATIENT/USER WEIGHT



ENVIRONMENT



FIRE SAFETY REQ



Järven Health Care

Bromsvägen 3 • SE-891 60 Örnsköldsvik, SWEDEN
Telephone: +46(0)660-22 28 50 • **Fax:** +46(0)660-824 10
Internet: www.jarven.se • **E-mail:** healthcare@jarven.se