



Järven Health Care

Throughout life



Soft Comfort hygienic mattress

For children and adults with a maximum weight of 70 kg

The Soft Comfort hygienic mattress is constructed using a special pressure-reducing multilayer system. A firm core is surrounded by a layer of extremely soft, specially treated Polyether foam. This construction provides the patient with the highest amount of comfort.

The unique surface and multilayer construction of this mattress reduce the shearing forces between the patient's skin and underlying body tissue during movement.

The Soft Comfort hygienic mattress is highly suitable, for patients/users up to a maximum weight of 70 kg, for preventing bedsores and related complications because of its excellent pressure-reducing qualities.



SOFT COMFORT
with **Lentex**

Bromsövägen 3, 891 60 Örnsköldsvik
Tel. +46 (0)660 22 28 50, www.jarven.se



CE • FREONFRI • UPPFYLLER BRANDKRÄV NT FIRE 037: A+B

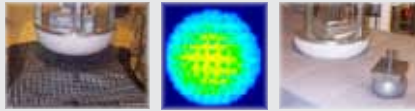
Soft Comfort hygienic mattress

For patients/users up to 70 kg

Mattress	Large Indenter 300 N	Large Indenter 600 N	Small Indenter 40 N	The method of measuring
Soft Euroflex	28.9	61.1	52.1	To avoid the individual impact of different people when measuring pressure, Swerea IVF has developed pressure indenters, simulating the shape of selected parts of the human body. An objective evaluation method has been created by applying pressure equal to a medium-sized human body on the indenters and measuring with pressure mats. The method of measurement is described in a proposal to the Swedish standard with the designation SS 876 00 13
Waterlily	30.1	55.9	56.4	
Solid	30.6	46.8	53.7	
Exclusive	35.9	53.0	59.2	
Soft Comfort	37.5	53.6	60.5	
Comfort	41.9	54.5	64.5	

• All measurements in mm Hg. Low number equal low pressure.
 • The number on "Large Indenter 600 N" is of special importance for heavier users.

Please contact Järven Health Care or SWEREA/IVF for more information about the test method



Features of the Soft Comfort hygienic mattress:



The **Soft Comfort hygienic mattress** is a 3-layer mattress with a firm core surrounded by another layer of very soft foam (density 23+40+23 kg/m³).

The **Soft Comfort hygienic mattress** is laminated with our unique surface layer, Lentex, which repels moisture and fluid. Lentex is a very flexible hygienic surface layer which contributes to the Soft Comfort hygienic mattress's excellent pressure-reducing qualities. The white colour aids early discovery of soiling on the surface of the mattress, an extra help for achieving better hygiene.

The **Soft Comfort hygienic mattress** is an extra soft mattress which replaces both the regular mattress and the mattress pad for smaller patients/users.

Article number	Standard sizes
5650	190-205x80x11 cm
5651	190-205x85x11 cm
5652	190-205x90x11 cm

Alternate sizes are available on special order. The Soft Comfort hygienic mattress can be ordered with optional surface layers other than Lentex. CE-certified. Freon free.

Warranty: 1 year for structural fatigue (Swedish standard B value test according to SS 876 00 11).
5 years for the Lentex surface adhesion.

All Järven mattresses are marked with the manufacturing year and week as well as the order number. This can be found on the short side of the mattress.

PRISMA - Your health care mattress guide

By using our *PRISMA - mattress guide* you will be able to choose the mattress that is right for you and your needs. For further information, please contact us.

PRISMA Your health care mattress guide.

COMFORT



HYGIENE



DURABILITY



PATIENT/USER WEIGHT



ENVIRONMENT



FIRE SAFETY REQ



Järven Health Care

Bromsvägen 3 • SE-891 60 Örnsköldsvik, SWEDEN
 Telephone: +46(0)660-22 28 50 • Fax: +46(0)660-824 10
 Internet: www.jarven.se • E-mail: healthcare@jarven.se